



CONSULTING | PLANNING
BUILDING | OPERATING

PGMM

Planungsgruppe M+M AG

leading supplier of technical
building services

Contact
Christoph Ginkelmaier, CEO
Peter Maag, CEO
Christian Fanslau, CEO

Headquarter:
Hanns-Klemm-Str. 1, D-71034 Böblingen
www.pgmm.com

Our Company



Since the foundation in 1970, PGMM developed with continuous growth to a national wide operating enterprise.

Our employees are supply engineers, electrical engineers, environment engineers, medical engineers, hygiene technology engineers as well as chemists, physicians, biologists and graduates of business administration.

In multidisciplinary groups we develop technical solutions for the infrastructure and the fixture of buildings. Such service is offered for new building, rebuilding, remedial action as well as for the continuing operations and maintenance.

The basis of our development and success are our active approach of the latest technical developments, the implementation of feasible solutions, the willingness for groundbreaking approach as well as our expertise in customer processes and intentions.

Our corporate structure in form of a public limited company facilitates a long term progress. The shares are with our top management. Therefore we are independent from other enterprises

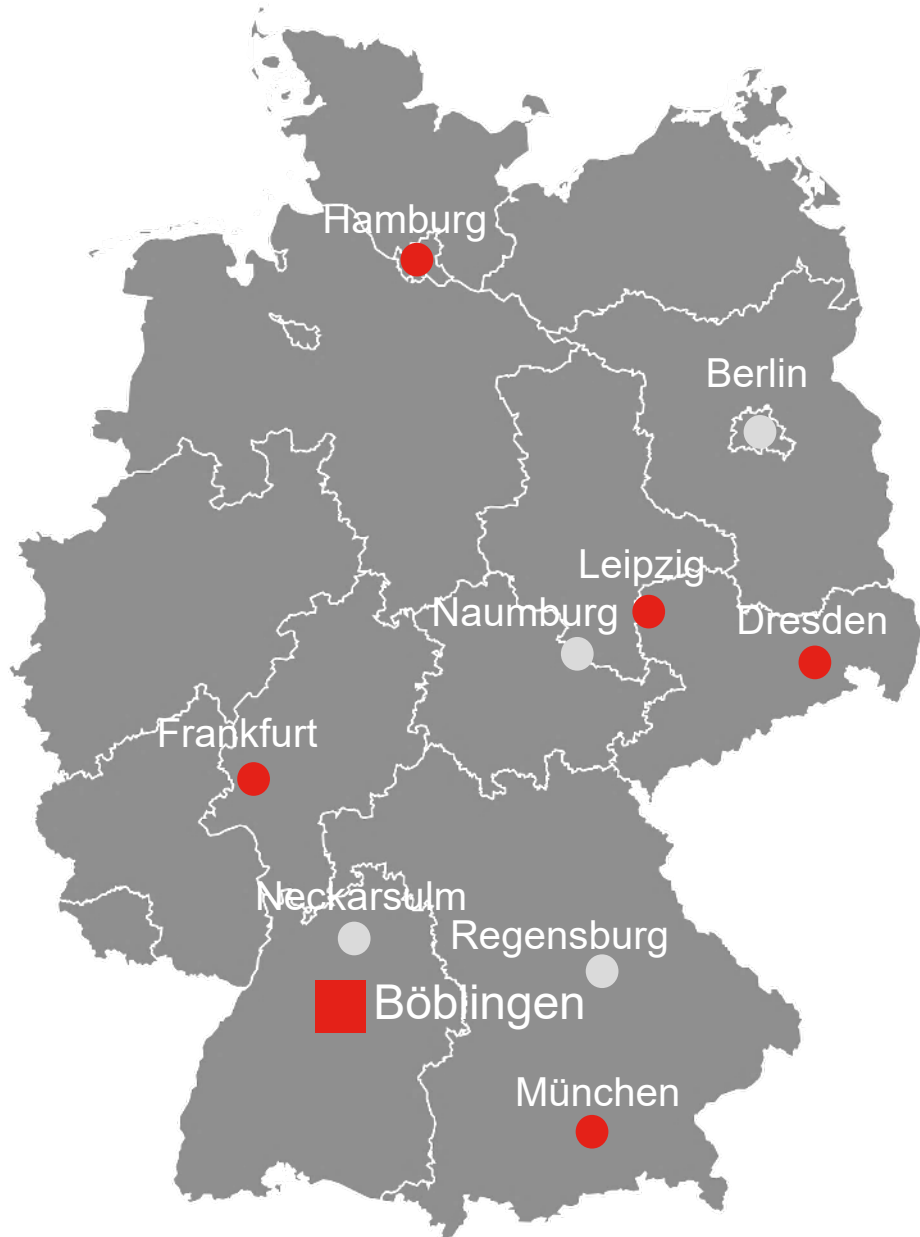
Managementteam



From top left to bottom right: **Wolfram Schiller**: Area Manager Böblingen, **Jens Baethke**: Area Manager Hamburg, **Peter Maag**: Member of Executive Board, **Reiner Spiegel**: Technical Director, **Christoph Gingelmaier**: Member of Executive Board, **Andreas Friese**: Compliance Officer, **Uwe Stüber**: Area Manager Leipzig, **Alexander Niessner**: Area Manager Frankfurt, **Dennis Schuler**: Area Manager Böblingen, **Claus Horrer**: Area Manager Böblingen, **Daniel Hoffmann**: Area Manager Hamburg, Laboratory Technology, **Lutz Förster**: Area Manager Dresden, **Alexander Nestler**: Area Manager Dresden, **Andreas Lauer**: Area Manager Böblingen, **Christian Fanslau**: Member of Executive Board, **Roland Holl**: Area Manager Medical Technology, Health Care Consulting, **Rainer Strobel**: Area Manager Technical Consulting, **Christian Voit** Area Manager München

Corporate Structure

Executive Board			
Peter Maag Assistant Christiane Schnepfer	Christoph Gingelmaier Assistant Ina Schnabel	Christian Fanslau Assistant Ina Schnabel	
	Commercial Director Compliance Officer Andreas Friese Assistant Inka Kübler	Technical Director Quality Management Reiner Spiegel Assistant Claudia Mayer	
Area Management			
Böblingen I Andreas Lauer Böblingen II Wolfram Schiller Böblingen III Claus Horrer Böblingen IV Dennis Schuler Frankfurt Alexander Nießner	Munich Christian Voit Hamburg I Jens Baethke Hamburg II Laboratory Technology Daniel Hoffmann	Dresden I Christian Fanslau Dresden II Alexander Nestler Naumburg Michael Pawlik Leipzig Uwe Stüber	Medical Technology Health Care Consulting Roland Holl Technical Consulting Rainer Strobel



- **Company Headquarters**
Planungsgruppe M+M AG
71034 Böblingen
- **Branch Office**
- **Office**

Company vision

OUR VISION:

We believe in a future in which buildings play an active role in shaping the energy transition through innovative technology. Buildings that are good for us and for our shared future.



WARUM WIR TUN,
WAS WIR TUN

OUR MISSION:

Driven by a passion for smart building technology, we design and plan systems for buildings that deliver maximum comfort whilst ensuring the highest levels of efficiency. Technology for tomorrow that conserves resources and generates energy. In this way, we are becoming a catalyst for the energy transition.

Our values

Diversity – people, personalities, opinions, social backgrounds, education – is a good thing and something we actively seek. It invigorates and enriches the company. Ultimately, what unites us all is our shared set of values. It enables us to pull together in pursuit of the company's goals, despite the high degree of individuality among our staff.

- Our mission statement reflects the values and aspirations that unite us as colleagues.
- It is aimed at all of us and embodies our commitment to teamwork.
- We love working with our customers to find the right solution.
- Our values bring us together.



NACHHALTIG



KUNDENORIENTIERT



BEGEISTERT



KLAR



VERBINDLICH



GEMEINSAM

Our Services

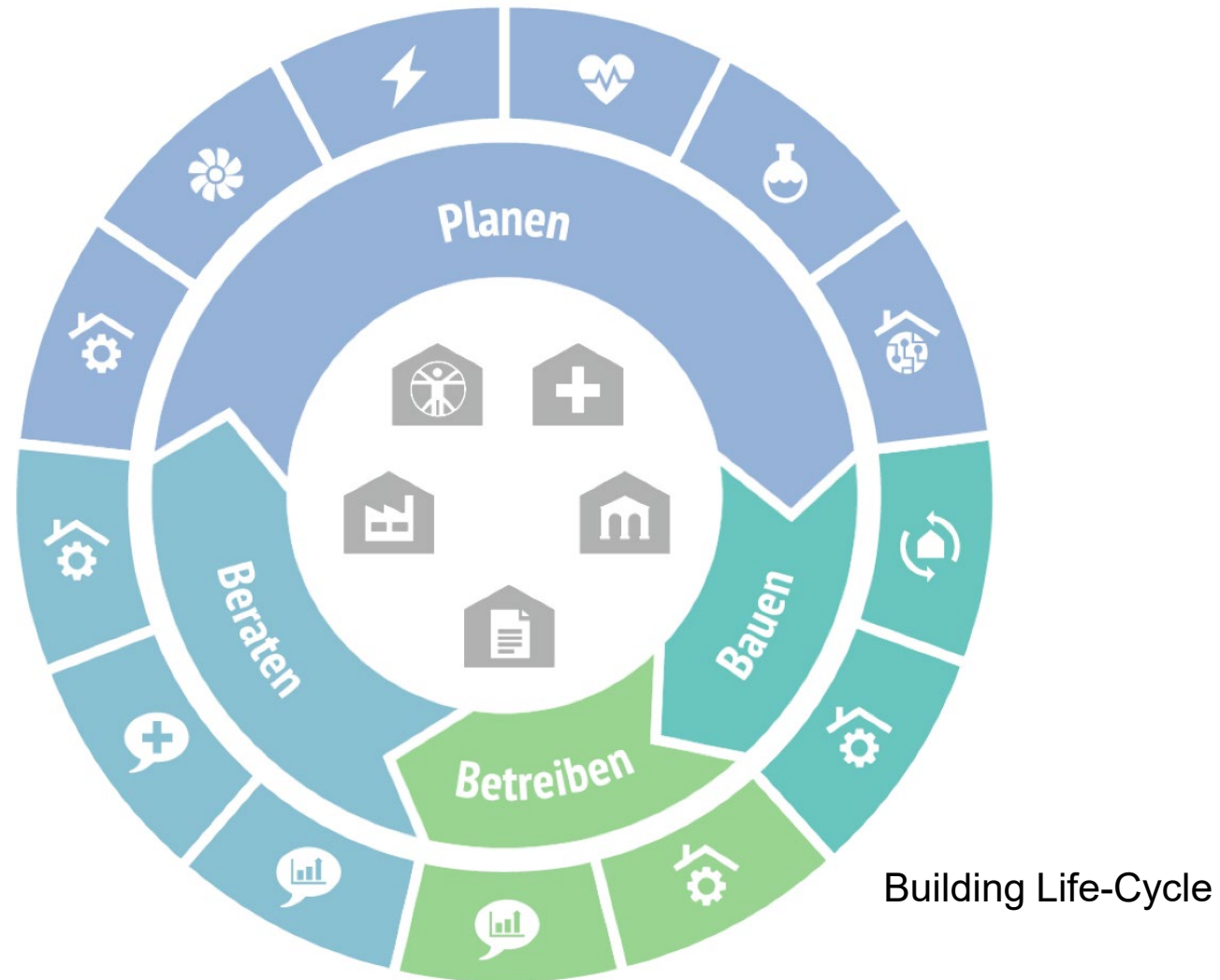
Our Services

We provide consultancy and planning services throughout the entire life cycle of a building.

Complex, sustainable building services engineering with an integrated, cross-disciplinary approach.

We always keep the client and the project at the forefront.

PGMM – Success through trust



References Overview

Technical Consulting



IMBIT Freiburg, New building laboratories

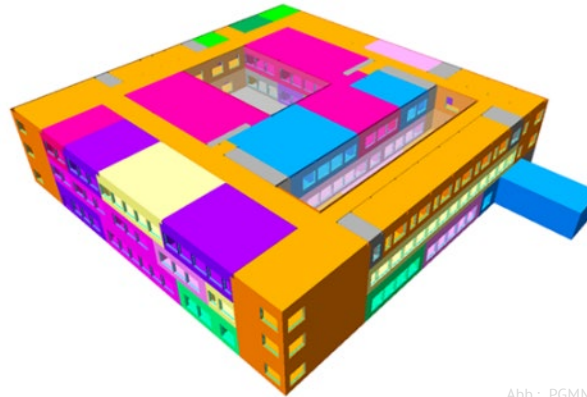


Abb.: PGMM

University Ulm,
Replacement construction energy efficiency plus

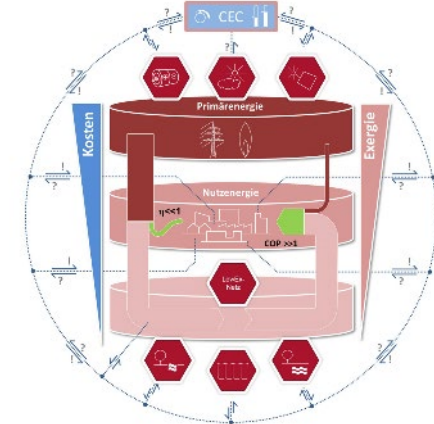
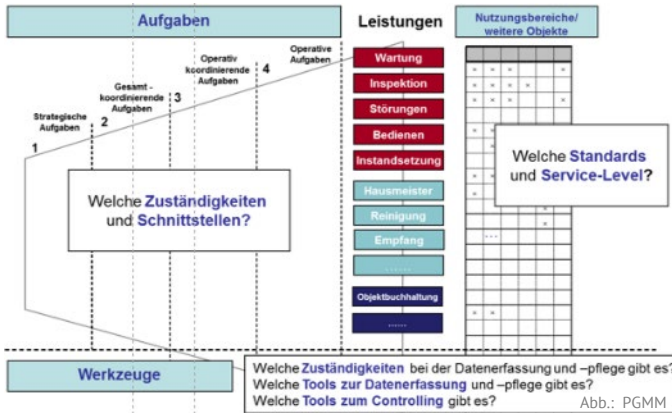


Abb.: PGMM

AUDI, innovative energy concept for long-term use
Expansion of AUDI Innovationscampus Ingolstadt



Audi Plant Neckarsulm, Böllinger Höfe
Draft and concept management for Facility Management



Foto: PGMM

CREDIT SUISSE ASSET MANAGEMENT
Technical Facility Management, Audit of 23 properties

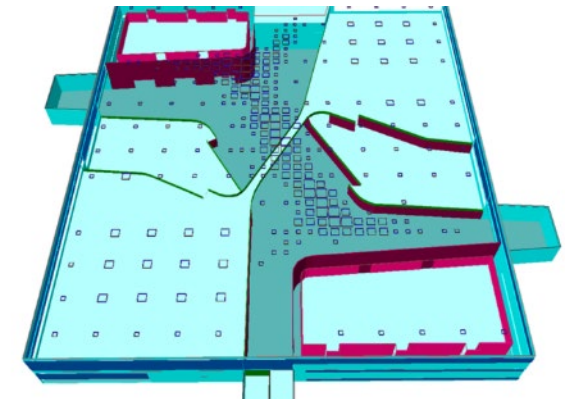


Abb.: PGMM

BMW New Car Production Plant, Shenyang (China), Energetic optimization of central building, 3 D Simulation

Health Care Consulting



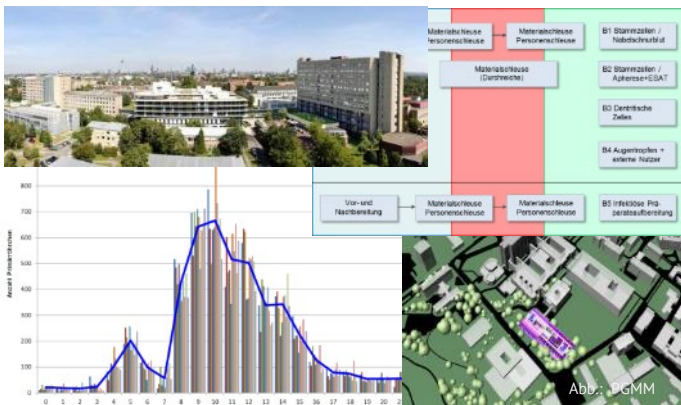
University Hospital Tübingen – Children’s clinic ,
Emergency unit, ambulances, technical room book



Robert-Bosch-Clinics – Central OR with logistics concept
in new function complex



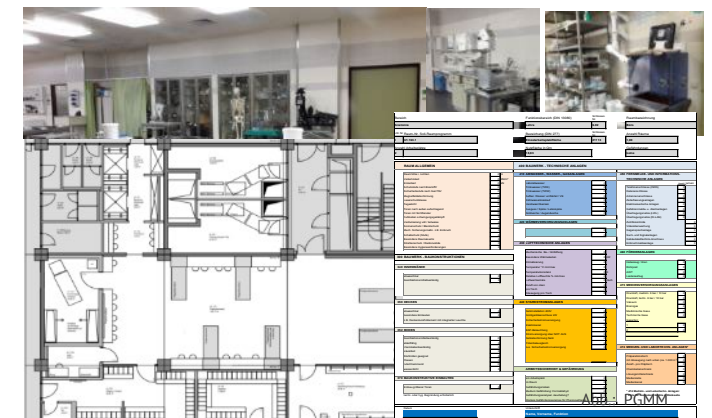
University Hospital Bonn, Parents-Child-Center,
company organization, interior planning, implementation
management and handling



University Hospital Düsseldorf – Clinical laboratories ,
health services, reorganization and consolidation



Rems-Murr-Clinics, Winnenden
Concept for rooms and functions



University Hospital Rostock
Concept for rooms, functions and medical structure

Health Care - clinic



Foto: Michael Voit

Wald-Clinic Jesteburg
Expansion and new bed complex for neurology



Foto: Michael Voit

University Hospital Leipzig
Expansion clinical core areas, house 7



Abb.: wörner traxler richter

Leipzig Clinic St. Georg
New building for outpatient surgery



LUDES GENERALPLANER GMBH

Military Hospital Hamburg, New multi-functional building /
Medical institute for the Marine



Foto: PGMM

Kbo Child-Center Munich
Reconstruction and expansion



Foto: Michael Voit

University Hospital Jena
New 2. unit

Health Care - clinic



Foto: Michael Voit

Clinic Chemnitz gGmbH
Reconstruction und new unit



Foto: Christian Voit

Clinic Wahrendorff
New building for psychosomatics und psychotherapy



Foto: Christian Voit

Clinic Burgenlandkreis
New child center

Foto: Michael Voit



Foto: Christian Voit

University Hospital Leipzig
Reconstruction neonates ITS/IMC



Foto: Michael Voit

Clinic HochFranken
Reconstruction and expansion clinic Naila



Foto: Michael Voit

Hospital Barmherzigen Brüder Trier
Reconstruction and expansion

Research



Foto: Michael Voit

Max-Planck-Institut for Intelligent Systems, Tübingen.
New institute building



Foto: Fotografie Dietmar Strauss Besigheim

ARENA2036 Stuttgart
New research plant



Bild: Michael Voit

Helmholtz-Center for Infection Research,
Braunschweig, New research building



Foto: Werner Traxler Richter

Helmholtz-Center Dresden Rossendorf e.V.
New center for radiopharmaceutical tumor research



Foto: Michael Voit

Fraunhofer-Institutes IPA & IGB, Stuttgart
New unit D



Foto: Michael Voit

Stuttgart University
New laboratory building

Science



Foto: Michael Voit

University Hamburg CHyN
New building



Foto: Michael Voit

Ostfalia Wolfsburg
New building



Foto: Michael Voit

University Würzburg
Chemie C2, New building



Foto: PGMM

Humboldt University Berlin
New institute for biology and life science



Foto: Michael Voit

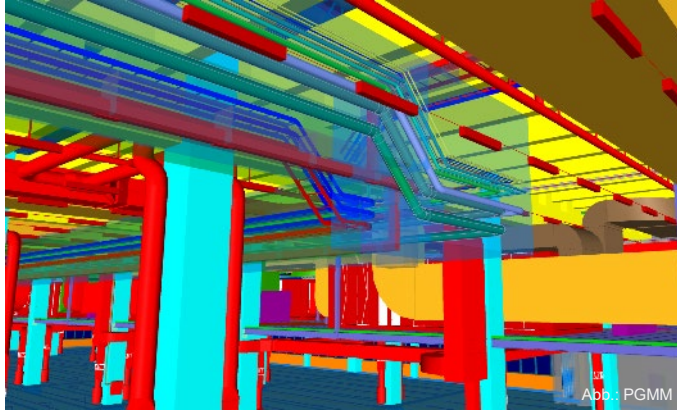
University Erlangen
New research building IZNF



Foto: Michael Voit

TU Braunschweig – BRICS
New building

Industry



Audi AG, Plant Neckarsulm, Body construction B14 Werk



BMW Plant, Shenyang



Mercedes-Benz, TGA Infrastructure, Immendingen



Porsche Leipzig, New body construction



**ACCUmotive Kamenz
Expansion production site, Plant II**



VW Wolfsburg, Center of efficiency for undergrate air duct

Industry



Foto: PGMM

Audi AG Ingolstadt
Central power unit and infrastructure Innovationscampus



Abb.: PGMM

Audi AG Ingolstadt
New structuring B segments A02, A03



Foto: PGMM

Daimler, Sindelfingen,
General planning, expansion Hse. 2, body shop

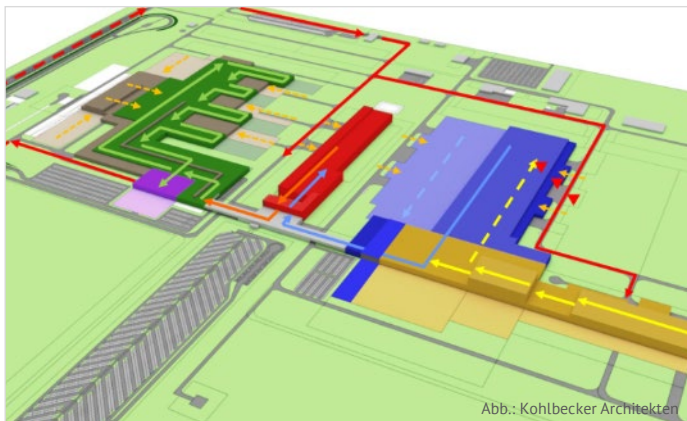


Abb.: Kohlbecker Architekten

BMW Ungarn, Plant 15.10 Debrecen
New vehicle production plant



Foto: Fotograf Stefan Müller

TRUMPF Neukirch
New production- and assembly plant

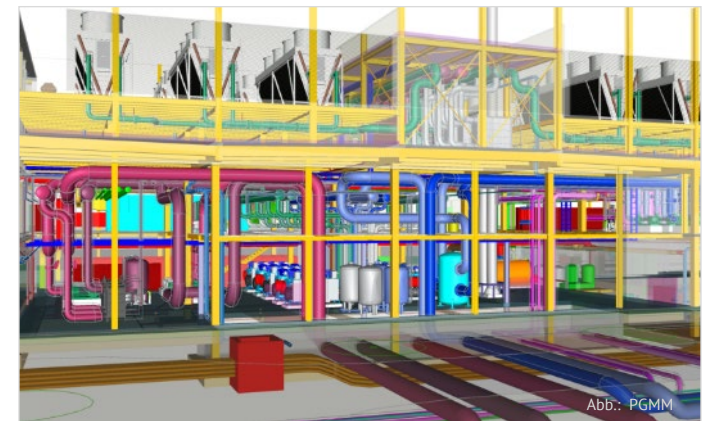


Abb.: PGMM

Audi InCampus Ingolstadt
Master plan infrastructure energy

Administration



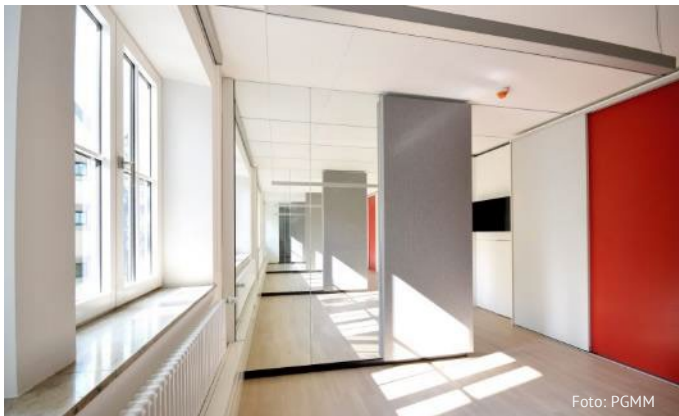
Daimler FLX Engineering Sindelfingen
New administration building with energy canal
Hse.64/5&EK847



Daimler Sindelfingen New center for electric integration
ESH with test bench, body shop and administration



GE Real Estate GmbH, Hochhaus am Turm Frankfurt
Reconstruction



Town hall Böblingen
Reconstruction



AER Fritz 9 München
Reconstruction and Expansion



Viega, Plant Elspe
New unit 13, industrial warehouse, administration

SUSTAINABLE
CUSTOMER-FOCUSED
ENTHUSIASTIC
BINDING CLEAR
TOGETHER